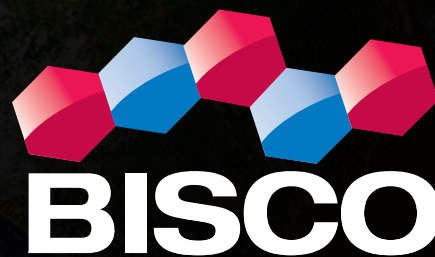


ALL-BOND UNIVERSAL[®]

The First TRULY Universal Dental Adhesive



1-800-247-3368
www.bisco.com

Rx Only

Too Good To Be True?

ALL-BOND UNIVERSAL... Absolutely Genius.



1-800-247-3368

www.bisco.com



ALL-BOND UNIVERSAL is the ideal chemical formulation for both self-etch and total-etch adhesion

Indicated for direct and indirect restorations

Contains **MDP monomers** for enhanced durability

Ultra **mild acidity** (pH > 3) allows for universal compatibility with dual-cured and self-cured materials

Hydrophobic formula (resin friendly) results in improved durability of the bond

Low film thickness allows the adhesive to readily flow into etched surfaces and offers both chemical and mechanical sealing

Clinical evaluation confirms the ease of use as a benefit leading to **virtually no post-operative sensitivity**

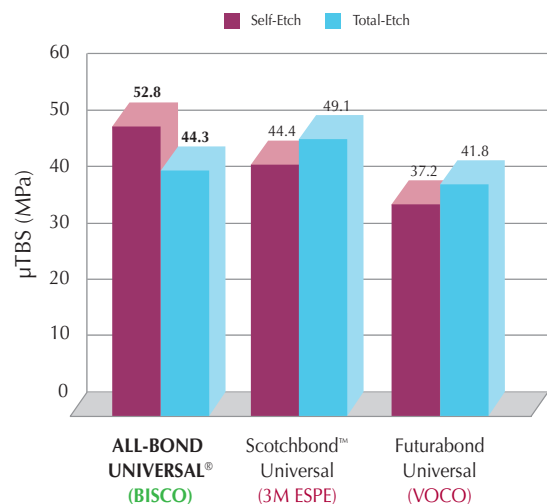
ALL-BOND UNIVERSAL Shear Bond Strength to Multiple Substrates (MPa)

	Light-Cured
Dentin	
Total-etch	42.5
Self-etch	36.9
Cut Enamel	
Total-etch	38
Self-etch	26.2
Uncut Enamel	
Total-etch	31
Self-etch*	19
Zirconia	26.9
Alumina	33.7
Titanium	38.0
Base Metal	37.8
Noble Metal	17.8
High Noble Metal	21.7
Lithium Disilicate (IPS e.max)	32.8
Glass Ceramic	21.5
Composite	48.8

* BISCO recommends using phosphoric acid on uncut enamel.

Shear bond strength generated using the Ultradent method. Data on file. BISCO, Inc.

Microtensile Bond Strength on Dentin**

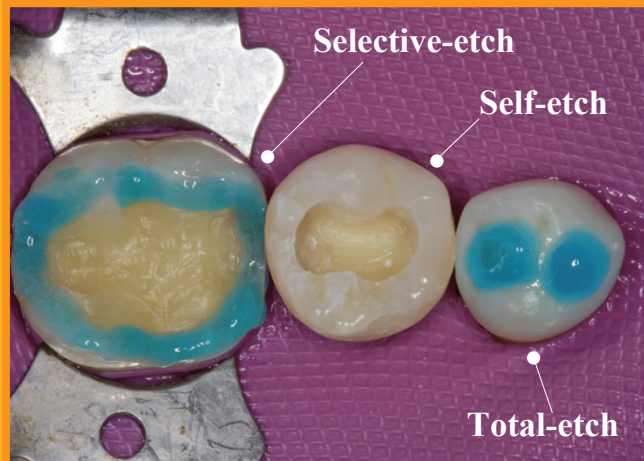


** 37°C-water for 24 hours

Dr. A. Wagner, Dr. R. Belli, Dr. J. Zorzin,
Prof. A. Petschelt, Prof. U. Lohbauer
(University of Erlangen, Germany)

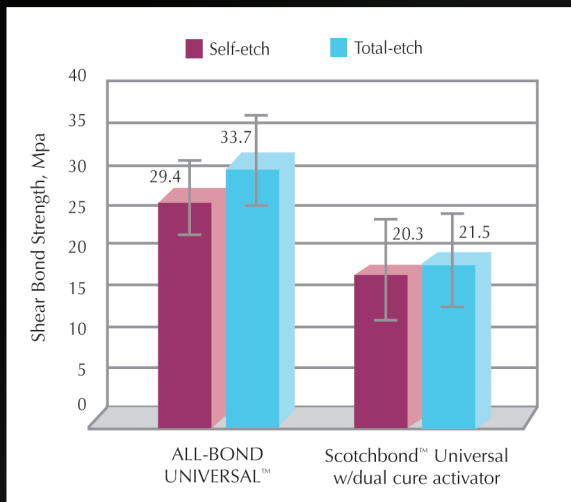
Academy of Dental Materials 2013 Conference – Dent Mater 2013; 29s:e87-88

BISCO Takes Bonding Another Step Further



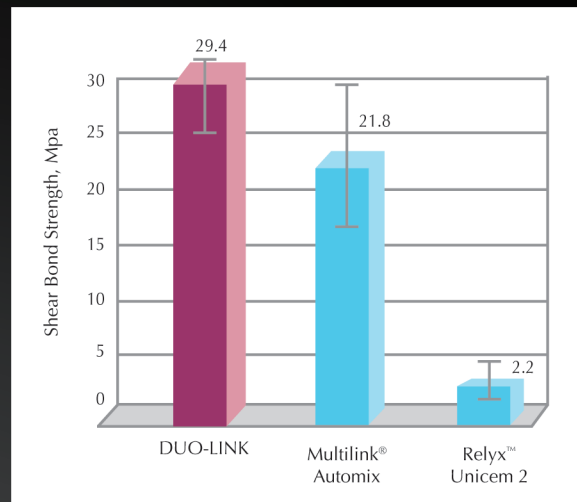
1. ALL-BOND UNIVERSAL offers the flexibility for total-, self- or selective-etch procedures.
2. ALL-BOND UNIVERSAL is compatible with light-cured, self-cured, and dual-cured resin composite and cement materials for all direct and indirect procedures.
3. Other single bottle adhesives may need more than 1 bottle for indirect restorations, but with ALL-BOND UNIVERSAL, **NO activator is required!**

Dentin Bond Strength Comparison: Indirect Restorations*



ALL-BOND UNIVERSAL was cemented with DUO-LINK™, and ScotchBond™ Universal was cemented with RelyX™ ARC. Cements were self-cured.

*data on file



DUO-LINK was used with ALL-BOND UNIVERSAL, and Multilink® Automix was used with Multilink Primer A and B. Relyx Unicem 2 is a self-adhesive resin cement. Cements were self-cured. DENTIN WAS NOT ETCHED.

**ALL-BOND
UNIVERSAL®**



Total-etch Case

Dentistry Courtesy of Jack D. Griffin Jr., DMD, MAGD, AAACD, ABAD



1. Treatment plan: lithium disilicate veneers #4-#13 with minimal preparations on enamel only.



2. A total etch technique was used with ETCH-37™ with BAC for 15 seconds and rinsed well.



3. ALL-BOND UNIVERSAL was applied liberally in several coats to a moist tooth surface.



4. ALL-BOND UNIVERSAL was air thinned, leaving a shiny surface.



5. eCEMENT® L/C was applied to the tooth surface and each veneer was placed and light-cured.



6. The conservative veneers bonded to enamel provide long lasting, patient pleasing restorations.

**ALL-BOND
UNIVERSAL®**



Self-etch Case

Dentistry Courtesy of Tyler Lasseigne, DDS, CDT



1. Preoperative view of teeth.



2. Preparations for zirconia-based crowns.



3. Application of Z-PRIME™ Plus to intaglio surface of zirconia crown.



4. Two coats of ALL-BOND UNIVERSAL in the self-etch mode applied, air dried and then light-cured for 10 seconds.



5. Application of DUO-LINK UNIVERSAL™ resin luting cement to intaglio surface of zirconia-based crown.



6. Final esthetic result.

ALL-BOND UNIVERSAL'S single bottle system offers the compatibility and speed for everyday effective performance.

	ALL-BOND UNIVERSAL® BISCO	Scotchbond™ Universal 3M ESPE	Optibond® XTR Kerr	Prime & Bond Elect™ Dentsply Caulk	Clearfil™ Universal Bond Kuraray
Total-Etch & Self-Etch	✓	✓	✗ (self-etch only)	✓	✓
Direct Restorations	✓	✓	✓	✓	✓
Indirect Restorations	✓	✓*	✓	✓▲	✓■
Compatible with Self-, Dual- and Light- Cure Materials	✓	✗*	✓	✗▲	✗■
Single Bottle	✓	✓*	✗**	✓▲	✓■
No Activator Required	✓	✗*	✓	✗▲	✗■
Price Per Application	\$	\$\$\$ [†]	\$\$	\$\$\$ [†]	\$\$

Data compiled from respective manufacturer's instructions for use.
Trademarks are property of their respective owners.

* Requires Scotchbond Universal DCA (dual-cure activator).

** Optibond XTR is a 2 bottle system requiring a primer and adhesive.

▲ Dual cure activator required for self-cured materials. Sold separately.

■ Clearfil Universal Bond requires a dual-cure activator.

† Price per application includes the cost of the activator.

ORDERING INFORMATION

ALL-BOND UNIVERSAL Standard kit B-72020K
1 Bottle ALL-BOND UNIVERSAL (6ml), 1 Syringe SELECT HV® ETCH w/ BAC (5g),
Accessories, Instructions

ALL-BOND UNIVERSAL Bottle Package B-7202P
1 Bottle ALL-BOND UNIVERSAL (6ml), Instructions

ALL-BOND UNIVERSAL Unit-Dose Packages



50 ALL-BOND UNIVERSAL Unit-Dose (0.20ml ea.), Accessories, Instructions B-73050K

100 ALL-BOND UNIVERSAL Unit-Dose (0.20ml ea.), Accessories, Instructions B-73100K

TO ORDER CALL:

1-800-247-3368

www.bisco.com

